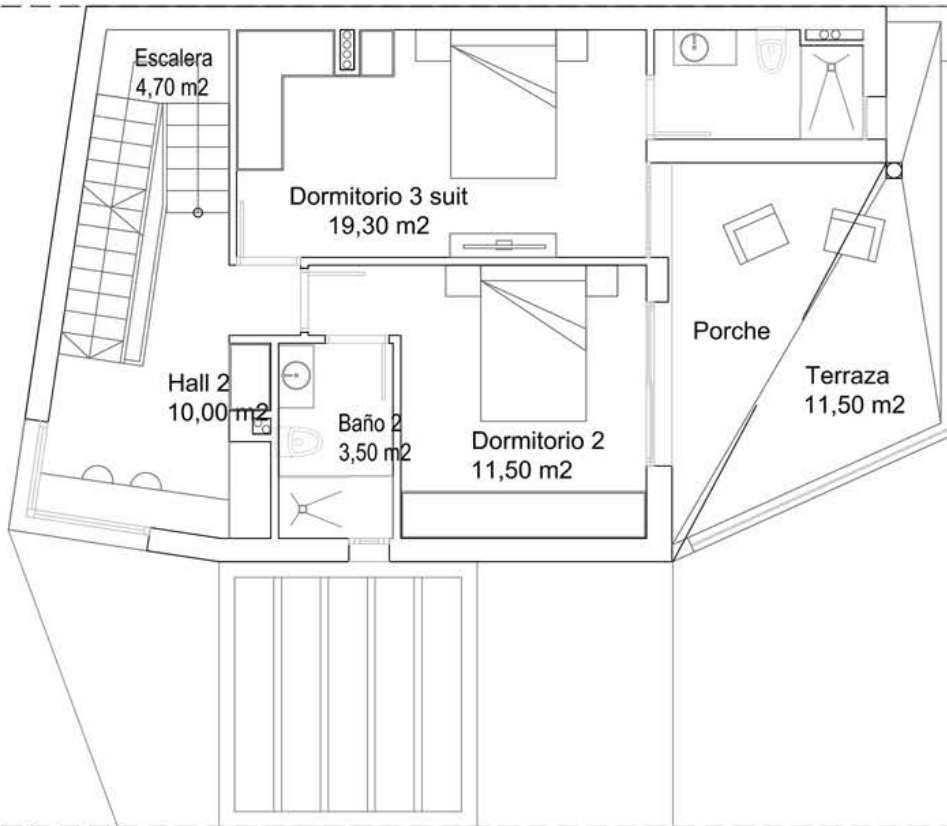


VIVIENDA 6



PLANTA 1

| | |
|---|-----------------|
| SUPERFICIE ÚTIL (SU) | 52,50 M2 |
| SUPERFICIE CONSTRUIDA (SC) | 65,00 M2 |
| TERRAZA | 11,50 M2 |
| TOTAL VIVIENDA P1 (SC + TERRAZA) | 76,50 M2 |

